



# Stakeholder Summaries

## NSW Landcare Enabling Program

The NSW Landcare Enabling Program is designed and delivered collaboratively by a collective team made up of staff from both Landcare NSW and Local Land Services (LLS). For most up to date positions and incumbents, check The Gateway for the most up to date information.

### The Landcare Enabling Program Team

LOCAL LAND SERVICES



**Program Business Partner**

Julie Busuttill



**Senior Officer**

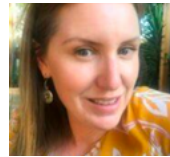
Lakshmi Kerr



**Senior Admin Officer**

Brenda Piper

NSW LANDCARE



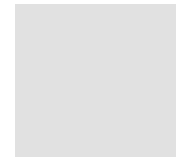
**Program Manager**

Jodie Lovell



**Shared Services Manager**

Olivia Meredith



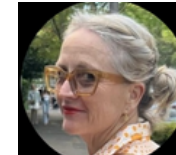
**Regional Community of Practice  
Coordinator**

Vacant



**Aboriginal Partnerships Manager**

Den Barber



**Admin Support Officer**

Susie Dunn

### The Joint Management Committee (JMC)

The Joint Management Committee (JMC) is made up of staff from both organisations and provides the central strategic oversight and governance for the Program. The JMC reports informally to the Minister for Agriculture and is made up of:

- Landcare NSW CEO
- LLS CEO
- Chair of Local Land Services
- Chair of Landcare NSW
- LLS Business Partner
- Landcare NSW Program Manager



# Landcare NSW

Landcare NSW is the peak representative body of the Landcare movement in NSW and the voice of community Landcare. The organisation is overseen by an eight-member executive and a small team of full and part-time staff.

Landcare NSW vision is to grow the Landcare movement to 1 million participants by 2040 and to be the go-to organisation for projects caring for the land.

To achieve our vision, and to reflect our purpose “We support Landcarers and our members, so local communities and environments flourish”, we have developed a strategic plan that will drive our activity and investments. Our strategic plan outlines our strategic pillars and every activity we undertake connects to those strategic pillars.

Landcare NSW has a State Advisory Council which meets 3-4 times a year. The purpose of the State Advisory Council is to facilitate information-sharing and coordination between the Regional Bodies and the Landcare NSW Board. The Landcare NSW State Advisory Council has 15 members and is made up of representatives from each of the 11 Landcare regions in NSW and the four office bearers of the Landcare NSW Board of Directors.

With thousands of active Landcarers in NSW, Landcare NSW acts as the conduit between local Landcare communities and key decision makers, working to ensure that local Landcare communities are supported at every level by providing leadership, skills, resources and representation.



We generate revenue from diverse streams to support our member Landcare groups and provide financial support for vital projects that bring together farmers, landowners, conservationists and nature lovers at a local level to address local issues. We coordinate and facilitate the building of skills, capacity, strength, connections and partnerships at every level, from individual volunteers and groups to district networks and regional associations.

Landcare NSW works to support the community Landcare movement by partnering with State and Federal Governments, Corporates, not-for-profit organisations, farming peak bodies, and other Landcare state/ territory and national peak bodies.



# Local Land Services

Local Land Services (LLS) is a regional-focused NSW Government agency delivering quality customer services to farmers, landholders and the wider community.

Local Land Services helps people make better decisions about the land they manage and assists rural and regional communities to be profitable and sustainable into the future. Connecting people with groups, information, support and funding to improve agricultural productivity and better manage our natural resources. Staff can answer questions on issues including:

- Agricultural production
- Biosecurity
- Natural resource management
- Help during emergencies

Local Land Services operates across 11 regions which align with the Landcare Enabling Program regions. These include:



[The Central Tablelands](#)

[Central West](#)

[Greater Sydney](#)

[Hunter](#)

[Murray](#)

[North Coast](#)

[North West](#)

[Northern Tablelands](#)

[Riverina](#)

[South East](#)

[Western](#)



Local Land Services is governed by the Chair and [Board of Chairs](#), who are responsible for the performance of the organisation across NSW. Regionally, it is local Boards that set the local strategic direction and are an important link to our communities. The state wide [Local Land Services State Strategic Plan 2020-2030](#) (plan on a page) feeds into our Local Strategic Plans.

**Vision** - Vibrant communities in productive healthy landscapes

**State Outcome Indicator** - Enhanced management and productivity of NSW land



**Grow**

Our programs and partnerships **grow** primary industries productivity and healthy environments



**Protect**

Our services and partnerships play a vital role in helping to **protect** against pests, diseases and environmental threats

**Connect**



We **connect** with our community and **connect** our customers with the best services, advice and networks

**Support**

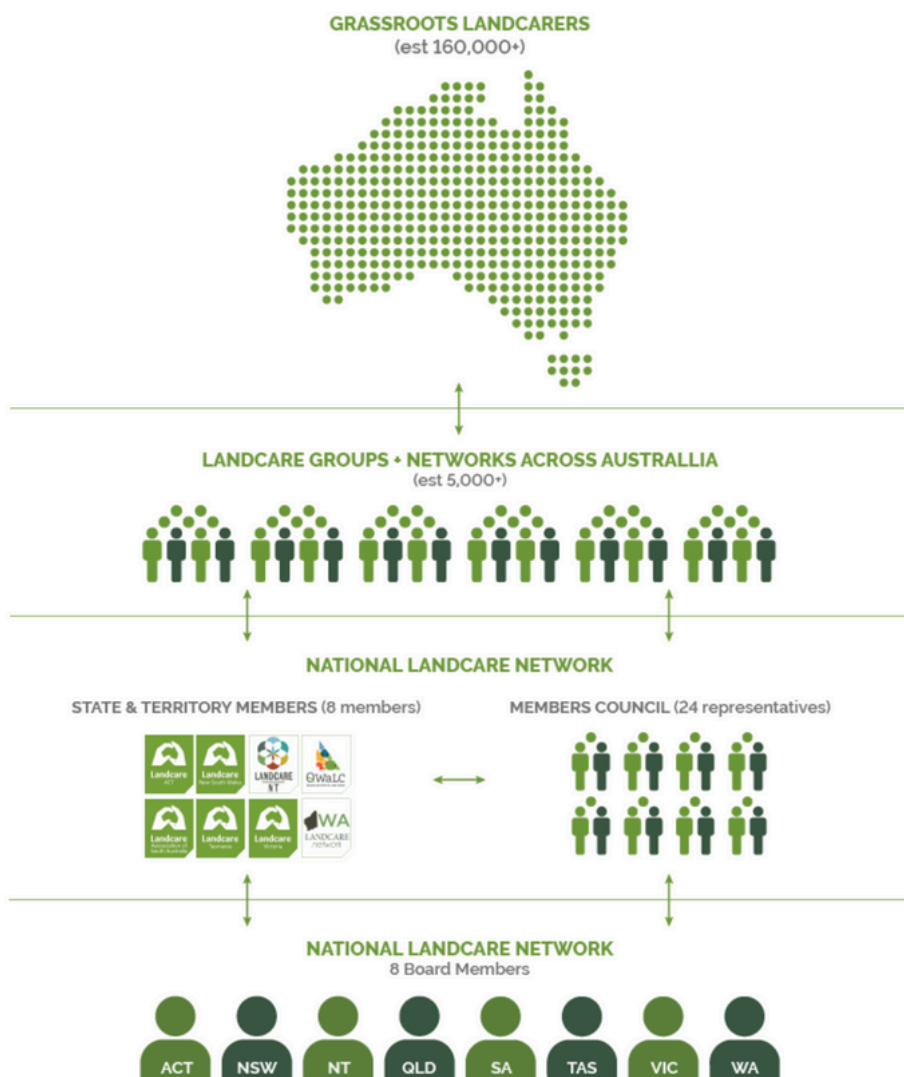


We play a vital role in helping primary industries prepare for natural disasters and are on the ground to respond and **support** when they occur.



# The National Landcare Network

The National Landcare Network (NLN) is the peak representative body for community Landcare groups across Australia. The NLN represents community Landcare across the country and seeks to foster, support and strengthen the knowledge, resources and capabilities of the Landcare movement and the thousands of volunteers who are at its heart.



## The National Landcare Network comprises the NLN Board & Members Council

The NLN Board comprises 8 members, one Director from each NLN Member State and Territory. The Chair and Vice-Chair are appointed from within their numbers. The Board is not representative, rather its function is to administer and direct the activities of the NLN. The Members Council is the representative heart of the NLN and is comprised of 24 grassroots Landcarers, 3 from each State and Territory. The Board and Members Council work independently of each other but in constant collaboration with high levels of consultation and feedback between each. The Board and Members Council are supported by a small dedicated team including the CEO and support staff.

The National Landcare Network also;

- Partners with Global Landcare to enhance collaboration and deliver capacity and knowledge building through cross-cultural exchange as well as amplify the impact of the Landcare approach.
- Makes [submissions](#) to Government and advocates on behalf of Landcare across the country.
- Moving forward [The National Landcare Network](#) will also play a key role in delivering the Strengthen Landcare - Deliver Nature Repair Program and will be host to The National Landcare Facilitator.



# Landcare Australia Ltd

---

Established in 1989 by the late former Prime Minister, the Hon. Bob Hawke AC, Landcare Australia Limited (LAL) supports over 6,000 groups and 140,000+ volunteers, Australia wide, with landcare projects that are focused on sustainable land management practices and environmental conservation.

Landcare Australia works collaboratively with federal, state and local governments and their agencies, Landcare peak bodies, corporate and philanthropic partners, sponsors, community groups and individuals to support the landcare community.

LAL provides support to Landcare and other environmental volunteering groups via:

- Administering the NSW Junior Landcare and Biodiversity Grant program and providing other funding opportunities to Landcare groups and schools across the state.
- Running the NSW Landcare Awards (in partnership with the Landcare NSW team). The awards are held every two years (odd years). The winners of these awards go on to represent NSW as finalists in the National Landcare Awards run the following year.
- National Landcare Awards, held in even years and presented at the National Landcare Conference.
- Conducting the Corporate partnerships program to secure support for Landcare through corporate partners.
- Landcarer platform - a social media platform designed to connect Landcarers across the nation. [www.landcarer.com.au](http://www.landcarer.com.au)
- Supplying free resources to support groups to mobilise volunteers.
- Fundraising on behalf of the landcare community including through bequests.
- Managing Landcare, Coastcare, Junior Landcare and Landcare Farming brands and issuing group logos.



The [Landcare Australia Strategic Plan](#) outlines the strategies that will take them to achieving their vision of...

**“All Australians actively caring for the land and water that sustains us”**

Landcare Australia is also the host of the National Landcare Directory, a directory of community environmental ‘care’ groups across Australia. The directory helps people search for groups by suburb, or postcode. Groups registered include Landcare networks and groups, farmers, landholders, Traditional land managers, Bushcare, ‘Friends of groups, Coastcare, Dunecare, Rivercare and Junior Landcare. Also registered are environmental community groups who may not have Landcare in their group name, yet they are caring for their local environment with conservation and sustainable land management activities. To check your groups listings head to [The National Landcare Directory](#) or to register a group head [here](#).

[www.landcareaustralia.org.au](http://www.landcareaustralia.org.au)



# National Landcare Program

---

The National Landcare Program (NLP) is a key part of The Australian Governments commitment to natural resource management and includes \$1 billion in funding for phase 2, to support a range of measures across natural resource management, sustainable agriculture and to protect Australia's biodiversity.

As a nationwide effort, the program has contributed to addressing problems such as:

- Vegetation loss
- Soil degradation
- Introduced pest weeds and animals
- Water quality changes and flows
- Fire regime changes

The National Landcare Program has funded the establishment and ongoing operation of the National Landcare Network, funding for Landcare Australia Ltd, broader grant funding to landholders and the Landcare community and the provision of Sustainable Agricultural Facilitators (SAFs) Previously called Regional Agricultural Landcare Facilitators (RALFs). To find out more about the SAF role and to contact your local SAF head to [The Department of Agriculture, Fisheries and Forestry.](#)

## Global Landcare

---

Global Landcare is a non-profit organisation supporting overseas communities to sustain their land, water and biodiversity.

Leaning on the success' of Landcare in Australia, Global Landcare have supported Landcare and projects around the globe including Germany, Iceland, New Zealand, Tonga, the Philippines, Sri Lanka, Indonesia, Bangladesh, Fiji, USA, Canada, Jamaica, Japan and 12 African countries.

The Global Landcare Program (GLP) manages The ALI Fund which provides small grants for projects carried out by established and new Landcare groups in developing countries.

Global Landcare has partnered with Australian Centre for International Agricultural Research and James Cook University to produce One of the most significant publications in Landcare for many years!

[Building Global Sustainability Through Local Self-Reliance: Lessons From Landcare](#)

The monograph is now available to order or download for free at the link above.

<https://globallandcare.org>



# Land Councils

---

The New South Wales Aboriginal Land Council (NSWALC) was established in the 1970s to assist in the fight for land rights. It was formally constituted as a statutory corporation under the New South Wales Aboriginal Land Rights Act in 1983.

As the State's peak representative body in Aboriginal Affairs, the New South Wales Aboriginal Land Council aims to protect the interests and further the aspirations of its members and the broader Aboriginal community. NSWALC is the largest member based Aboriginal organisation in NSW.

NSWALC is committed to ensuring a better future for Aboriginal people by working for the return of culturally significant and economically viable land, pursuing cultural, social and economic independence for its people and being politically proactive and voicing the position of Aboriginal people on issues that affect them.

There are 121 Land Councils across NSW, divided into 5 zones.

[View the interactive Map of Land Councils here](#)

[Access contact details for each of the Land Councils here](#)

[Find and contact your local Zone office here](#)

# Human Resources Support

---

Human Resources support is provided through two avenues

## Funding Deed Holders

Funding Deed Holders have access to a full service Human Resources Support service for Employers providing 24/7 Advice line, templates, policies, WHS support and webinars/training through Peninsula [www.employsure.com.au](http://www.employsure.com.au)

## Employee Assistance Program (EAP) for funded staff and volunteers

MindFit at Work is an advice line with wellbeing support and counselling services. Landcare NSW is supporting employees and volunteers by providing one confidential counselling session via video, phone or face to face (where available). You can also access ongoing digital training pop-ups & wellbeing insights through the Mindfit EAP app or their website.

To get set up click on "create account" then enter the Landcare NSW code 091499 and follow the guided steps to register. [www.mindfitatwork.com.au](http://www.mindfitatwork.com.au)



# NSW National Parks and Wildlife Service

---

NSW National Parks and Wildlife Service (NPWS) is part of the NSW Department of Climate Change, Energy, the Environment and Water. They manage more than 895 protected areas in NSW, covering over 7.6 million hectares of land. This represents more than 9.5 per cent of the land area in the state and includes national parks, nature reserves, flora reserves, World Heritage areas, rainforests, beaches, alpine areas and sites of great cultural and historic significance. Management of these areas involves a wide range of responsibilities, including plant and animal conservation, fire management, sustainable tourism and visitation, research, education, volunteering programs and more.

NSW National Parks produces plans of management explaining how reserves across the state will be managed, including information on natural environments, Aboriginal culture, historic sites, geographical land forms, biodiversity, weeds and pests, recreational opportunities and more. These documents are initially created in draft format and, after public consultation, are adopted for implementation.

NPWS fire management strategies are designed to help:

- Safeguard human life and property
- Promote the conservation of biodiversity.
- Protect Aboriginal sites and historic assets

[Search for specific Parks Management Plans here](#) or head to the NSW National Parks and Wildlife Service [website](#).

## Coastcare NSW

---

Coastcare is, in many ways, an extension of the Landcare movement focusing on the coast. Coastcare groups care passionately about the protection and management of our coastal and marine environments.

Like Landcare, Coastcare volunteers and groups identify local environmental problems and work together with government, local businesses, First Nations organisations, youth groups, schools and community groups to achieve practical and sustainable solutions. The conservation activities of the volunteers include dune erosion, loss of native coastal plants and animals, storm water pollution, weeds and control of human access to sensitive and vulnerable areas, and education programs for the broader public about issues affecting coastal and marine areas.

Coastcare is celebrated annually through National Coastcare week (December) and Coastcare groups can access specific funding allocated to Coastcare activities.

To find out more or to access Coastcare specific resources, head to the [Landcare Australia website](#)





# Bushcare

---

A Bushcare Group is a volunteer group that conducts bush regeneration to aid biodiversity conservation on public or private bushland in Australia. Most suburban councils are involved in Bushcare to varying degrees, either by employing professional staff or facilitating volunteer involvement. Bushcare groups are usually a part of a local Council or National Parks & Wildlife Service program. They are often provided with assistance in the way of qualified and experienced supervision, tools, training, etc.

Bushcare volunteers are often also involved in Landcare and Landcare collaborate very effectively with Local Councils and Bushcare in many areas. One powerful example of this is The Bridges to Boorowa program that is a collaboration between North Sydney Council and Boorowa Community Landcare Group where North Sydney Council's Bushcare program has been taking volunteers to the rural town of Boorowa since 2000 to plant thousands of trees, shrubs and grasses.

To find out what's happening in your local area contact your [Local Government Authority](#) or search the [National Landcare Directory](#) which also lists Bushcare and other environmental community groups.

